

Searchwords: heated rear screen, rear screen not fully clearing, heated screen element broken.

Following on from my recent thread in Electrical I thought I'd repair this today: [viewtopic.php?f=5&t=33920](http://www.406coupeclub.org/viewtopic.php?f=5&t=33920)

I ordered some conductive paint off ebay, it was around £7.50 with postage. It comes in a small 3g bottle. I applied with with a tiny paintbrush (coin to get an idea of brush size):



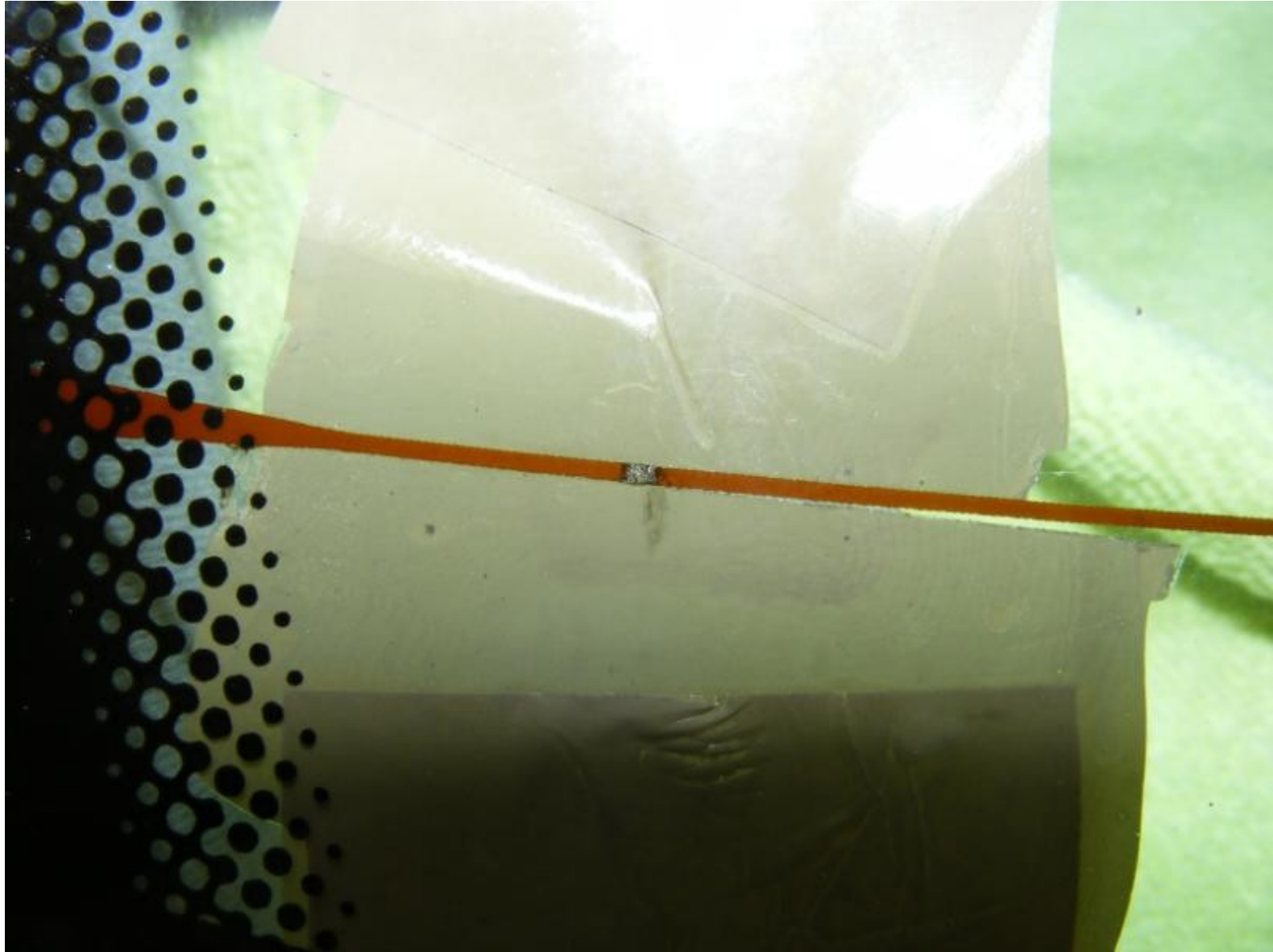
First off I flopped the rear seats down & cleaned the inside of the rear screen. Also lay the cloths on the parcel shelf below the area you're working on with the paint incase any of it drips on the shelf:



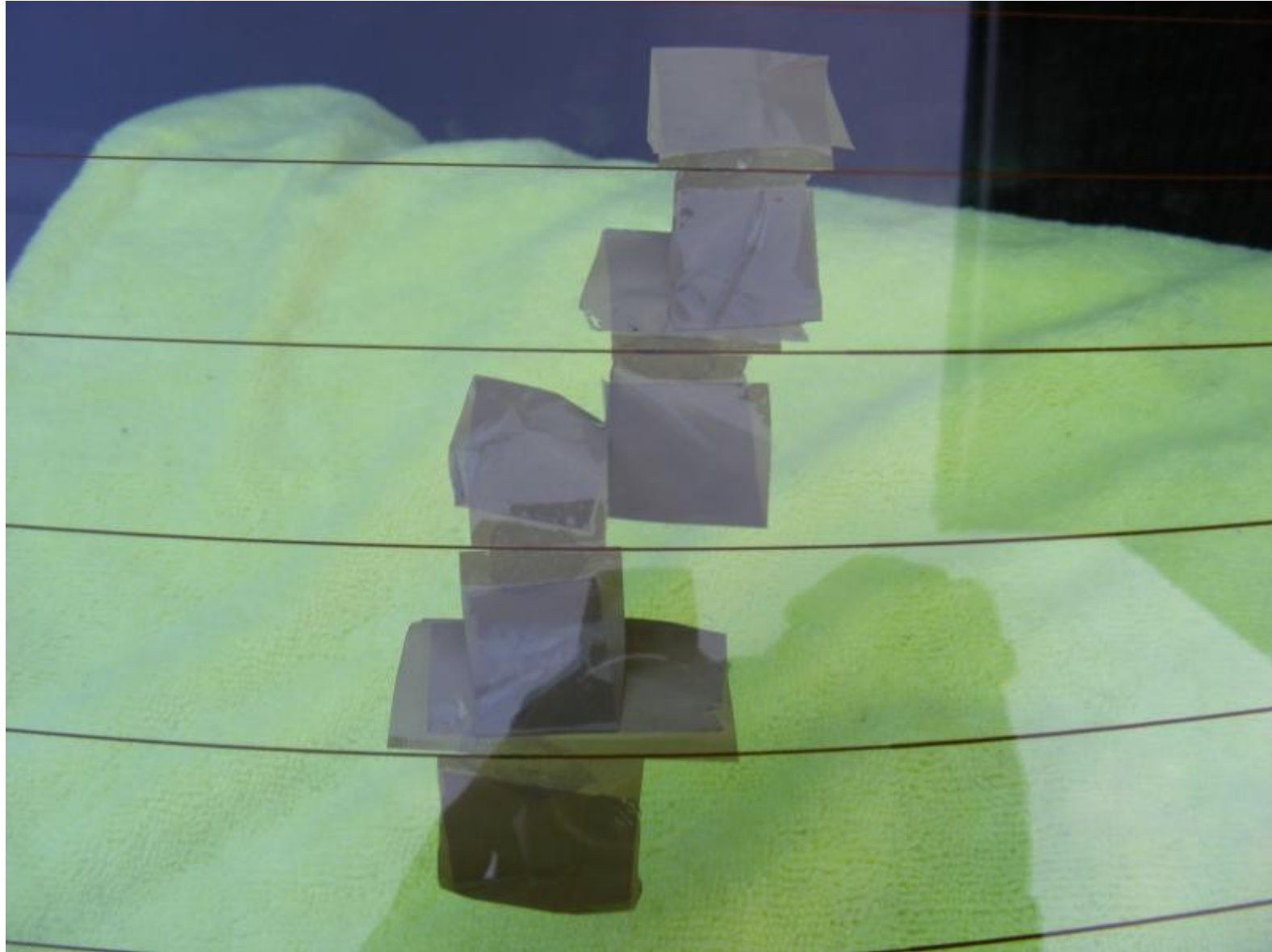
I found where mine were faulty, more than I originally thought. So I used brown tape & put a piece either side of the break in the element, as close to the original wire as possible:



Close up of one of the many breaks:



Taped up breaks from the other side of the screen:



From the inside, these had already had the conductive paint applied:



Close up of the paint on the passenger side:



That's basically it. It took just a minute to apply the paint, but probably 20 minutes getting the cellotape as close to the wire as possible to keep the lines tidy, not easy with the angle of the screen. I'll leave the tape on for an hour or so then remove it. I'll leave the cloths in place too, just incase any of the paint drips. I'm sure it won't as it was just a light coating 🤞 .