

How To: Key plip servicing 2001<

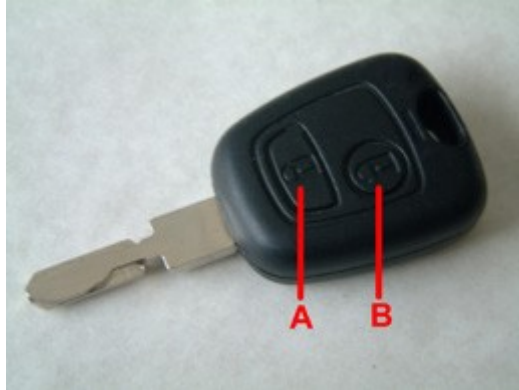
Operation

To double lock vehicle and set alarm, press button (A)

Some Models: Hold button (A) to close windows

To de-activate deadlocks and alarm, press button (A) within 5 seconds of locking

To unlock vehicle, press button (B)



Programming

Requires suitable diagnostic equipment to program key to immobiliser

Switch ignition on (II)

Press and hold button (A) for 10 seconds

Switch ignition off

Wait 10 seconds

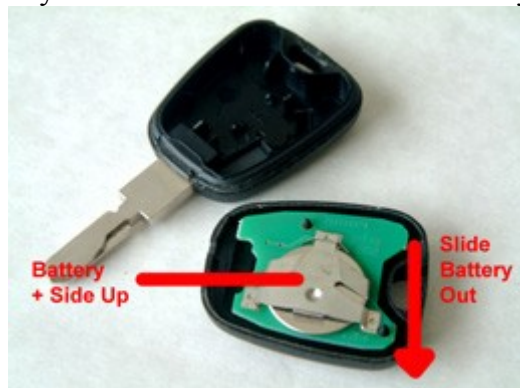
Test key by locking and unlocking vehicle

Repeat to program any additional keys

Battery Replacement



Remove key from any key rings. Using a coin or screwdriver in the slot at the rear of the key, carefully prize open the casing (some keys may also have a screw on the back of key, remove if present)



Note the position of the battery (positive side up), slide old battery out and slide in new battery.